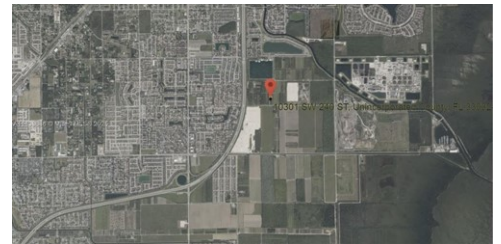
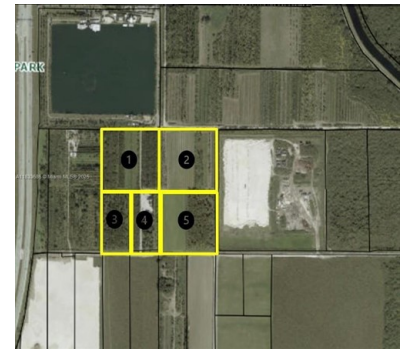




\$ 24,750,000



10301 SW 240th St, Homestead, FL 33032

- » MLS #: A11833686
- » Land | Lot: 39.73 acres
- » More Info: [10301SW240thSt.Listing.Site](https://www.sellingthe305.com/10301SW240thSt.Listing.Site)



Ana Collazo Gonzalez-Mir  
(305) 761-5700  
[ana@sellingthe305.com](mailto:ana@sellingthe305.com)  
[www.sellingthe305.com](http://www.sellingthe305.com)

**kw**  
**KELLERWILLIAMS**  
Keller Williams Coral Gables-Coconut Grove  
550 Biltmore Way  
PH2AB  
Coral Gables, FL 33134  
(305) 662-7325

Rare opportunity featuring 39.73 acres of prime agricultural land in South Miami-Dade County, consisting of five contiguous parcels (30-6, 30-6, 30-6, 30-6, 30-6). Access through gated entrance 10301 SW 240th St. The property has electricity, water & also includes a residential duplex, office, storage & utility buildings. Zoned AU, the property supports a wide range of uses (see Miami-Dade zoning code for permitted uses). Commercial Truck parking is permitted on these parcels. Its visibility & proximity to the FL Turnpike enhances its appeal. Adjacent and nearby parcels are also available, providing buyers with the option to assemble additional acreage and expand their footprint in this strategic South Miami-Dade location.

